



Beaverton Police Department

4755 S.W. Griffith Drive
Beaverton, Oregon 97005

Chief Jim Monger



NEWS RELEASE

Officer Jeremy Shaw
Public Information Officer
(503) 969-6502

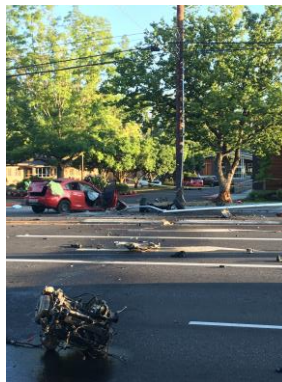
Released: July 31, 2018
Case No: 18-2090145

DUII/ MANSLAUGHTER TRAFFIC CRASH

On July 28, 2018 at 2:51 a.m. a Beaverton Police officer witnessed a vehicle traveling westbound on SW Farmington Road near SW 142nd at an extremely high rate of speed. As the officer attempted to catch up to the vehicle, it crashed head-on into a tree near the intersection of SW Farmington Rd/SW Murray Blvd. The vehicle hit the tree with such force that it removed the engine and front axle from the vehicle. The engine came to rest five lanes of travel away from the vehicle.

The vehicle was occupied by two people, 21-year-old Jonathan Guzman of Salem, OR and 36-year-old Ariana Salgado-Gaudarrama of Unincorporated Washington County. Ms. Salgado-Gaudarrama suffered severe injuries and passed away on scene. Mr. Guzman was transported to a local hospital for non-life threatening injuries. Mr. Guzman showed signs of impairment and a DUII investigation was completed.

On July 30th, Mr. Guzman was released from the hospital and Beaverton Police officers took him into custody. Mr. Guzman was taken to Washington County Jail and charged with Manslaughter in the Second Degree (Measure 11), DUII, Criminal Mischief in the Second Degree and Reckless Driving.



##BPD##

Like Us On 